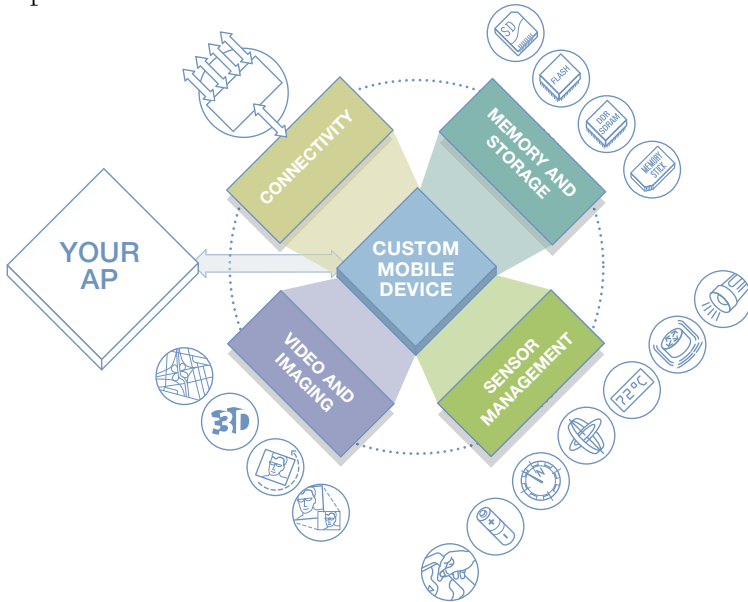


About SiliconBlue

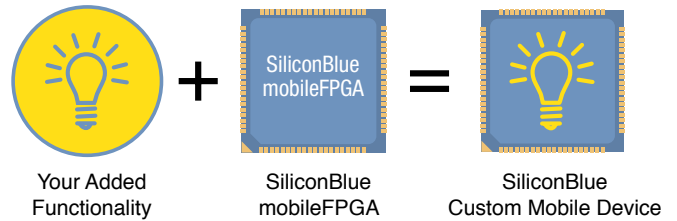
SiliconBlue® Technologies, founded by Kapil Shankar, is a pioneer and leader in Custom Mobile Device™ solutions for the consumer handheld market. Utilizing a single chip, ultra-low power Field Programmable Gate Array (FPGA) fabric, SiliconBlue's mobileFPGA™ devices enable mobile designers to quickly add features to their mobile platform in areas such as connectivity, memory & storage, sensor management, and video & imaging. SiliconBlue's mobileFPGA devices are shipping in millions of units to top tier consumer OEMs.



By incorporating a SiliconBlue Custom Mobile Device as a companion chip to an existing mobile chipset, mobile designers can quickly and easily evolve their platform with innovative features.

Custom Mobile Devices

Custom Mobile Devices represent a total solution for customers. They are ready-to-use devices that incorporate custom functionality as well as standard building blocks that are standard to handset applications. The integrated functionality is delivered on SiliconBlue's mobileFPGA devices. SiliconBlue's mobileFPGA devices are offered on both 65-nm as well as 40-nm technology using standard CMOS. With logic up to 16K logic cells, footprints as small as 2.5mm x 2.5mm and standby power as low as 12 µW, SiliconBlue mobileFPGAs are ideal for handheld applications where battery life is key.



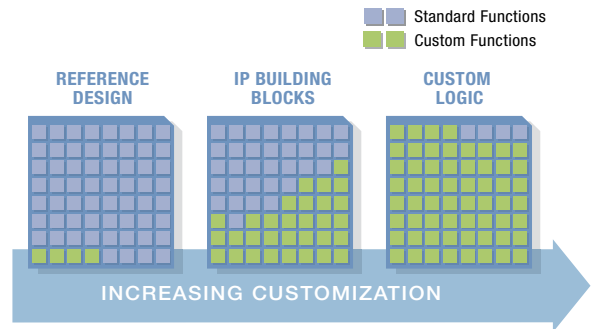
mobileWARE

SiliconBlue's mobileWARE™ customizable function blocks consist of a broad portfolio of over 50 silicon proven IP building blocks that can be arranged and modified to achieve the customer's desired unique solution.

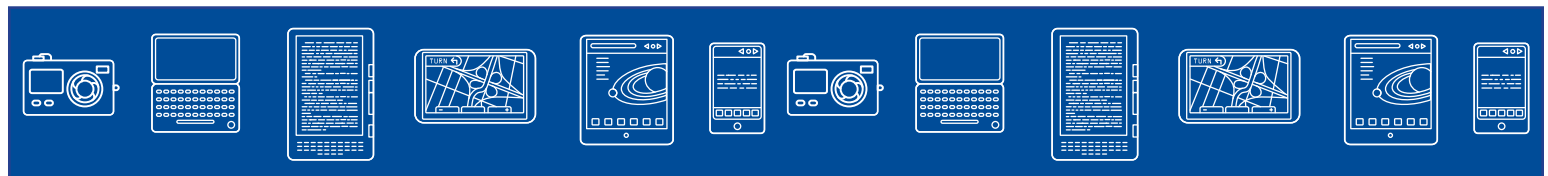
SiliconBlue also offers design services to help customer take their idea to silicon. SiliconBlue can engage with a customer on different levels that include providing a complete reference design, providing tested and optimized IP blocks, or delivering a full turn-key design.

Consumer Device Convergence

Consumer device convergence has been in full swing since the introduction of the smartphone. This is the most powerful trend-shaping consumer handheld products today with further convergence spreading to new applications such as eBooks, digital still cameras (DSCs), tablets and Mobile Internet Devices (MIDs). Enabling the drive toward product convergence is the need from system designers to integrate multiple, new functions into consumer handheld applications using chips that must be ultra-low power, very small and low cost. SiliconBlue's mobileFPGA devices are designed to meet all three criteria, while also providing designers the added benefits of programmable logic: shorter development time, zero NREs and the ability to make design changes any time in the product life cycle.

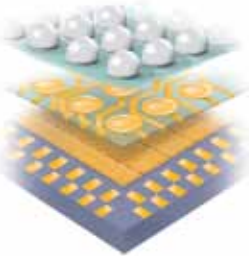
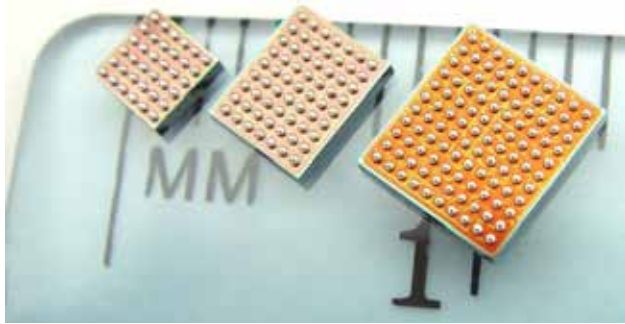


SiliconBlue can help you implement new features to your mobile application. SiliconBlue can provide complete reference designs, IP building blocks, or even turn-key design services based on your design needs.



Technology

SiliconBlue's mobileFPGA devices utilize a SRAM-based, Field Programmable Gate Array (FPGA) fabric combined with an ultra-low power, Non Volatile Configuration memory (NVCM) fabricated on a standard, low-power CMOS process, resulting in a customizable, single-chip solution. The single chip solution (like ASICs & ASSPs) eliminates the need for external Flash PROMs, saves part count, board space, and cost while providing effective design security. Fabricated at the industry's largest pure-play foundry, TSMC, the LP process can be directly scaled to 28nm geometry. SiliconBlue is the first programmable solution in the industry to utilize wafer level chip scale technology to create small footprint devices.



Wafer Level Chip Scale Packaging enables standard mounting balls to be attached directly to the die via a redirection layer, minimizing board space and device costs.

SiliconBlue at a Glance

- Founded by Kapil Shankar
- Funded in 2006
- Headquartered in Santa Clara, California, USA
- Privately held company
- Over 250 active end customers
- Over 40 patents
- Key partners: TSMC, ASE, and Synopsys



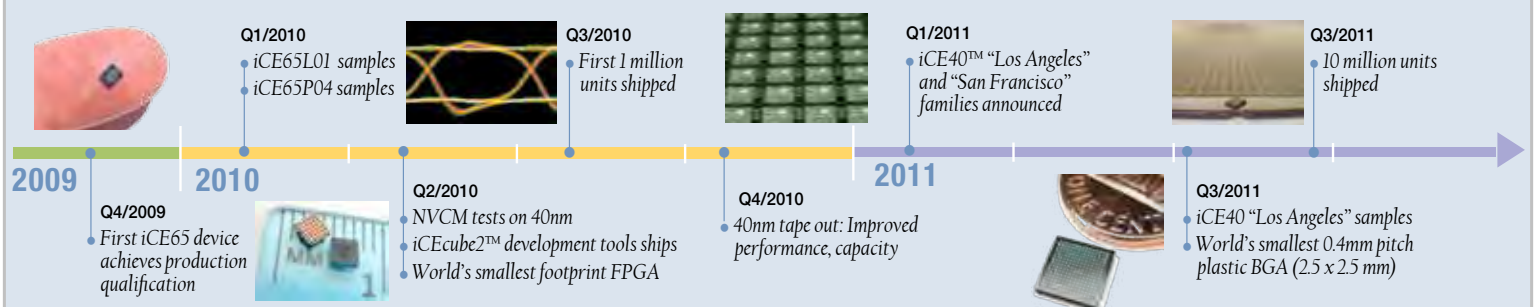
Management Team

- Kapil Shankar - CEO
- Michael Hasley - CFO
- Andrew Chan - VP, Engineering
- Denny Steele - VP, Solutions Marketing
- Dr. D.J. Wang - VP, of Software Engineering
- Rick Lain - VP, Asia Sales
- Jim Mulligan - VP, North America Sales

Investors

- Apex Venture Partners
- Atlantic Bridge
- Blue Run Ventures
- Crosslink Capital
- NEA
- TSMC

SiliconBlue Milestones



Headquarters:
3255 Scott Blvd., Bldg. 7 Suite 101
Santa Clara, California 95054
P: +1 408-727-6101

Taiwan Office:
SiliconBlue Technologies Corporation
4F, 25, Sec. 1 TunHua S. Rd.
Taipei, Taiwan, R.O.C.
P: +886-2-2577-4352

Shanghai Office:
SiliconBlue Technologies Corporation
A/1509 High-Tech Building
900 Yishan Road
Shanghai 200233, China
P: +86-21-6083-3690

Shenzhen Office:
SiliconBlue Technologies Corporation
188, Room A, B, 12B/F, ZhenYe Building,
Baoan South Road, LuoHu District,
Shenzhen, 518001 China
P: +86-755-2502-5101

Korea Office:
SiliconBlue Technologies Corporation
T-1301, PoongLim Iwant Bldg.
255-1, Seohyeon-dong, Bundang-gu
Seongnam-si, Gyeonggi-do, Korea
P: +82-31-781-7046

For additional information visit us at www.siliconbluetech.com