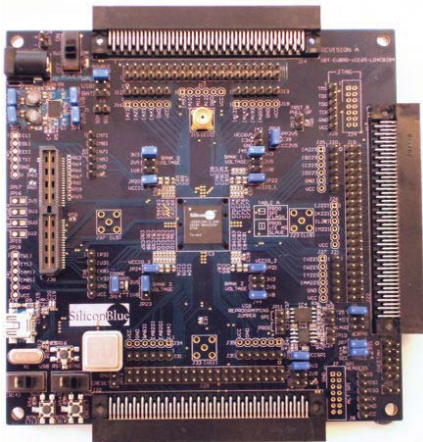


iCE65L04 Evaluation Kit

(contents not to scale)

Revision B iCE65L04 Evaluation Board



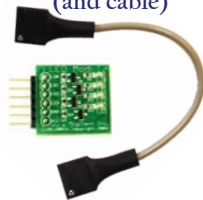
A complete platform to develop your iCE65 applications, connect it to your real-world application, and measure power.

Two-pin MTE Power Cable



Easily connect your multimeter to power test points provided on the board.

Four-LED Peripheral Module (and cable)



USB 2.0 Cable (A to mini-B)



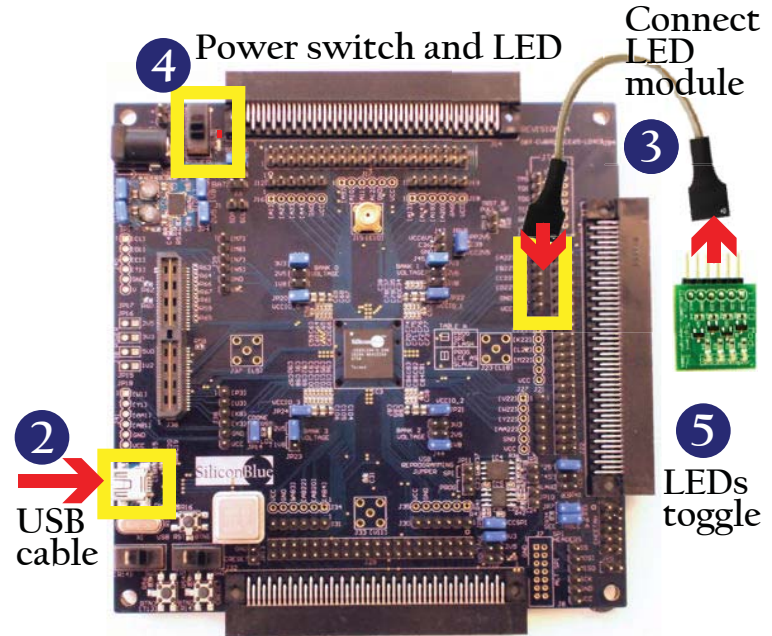
Power the board from your PC or powered USB hub. Program and debug your iCE65 application.

Open for QUICK START instructions

Quick Start Instructions

Your iCE65 Evaluation Kit board is pre-tested, pre-programmed, and ready for action.

- 1** Unpack the board, the USB cable, and the LED Peripheral Module. The red and black cable is only required for taking power measurements using your multimeter.
- 2** Connect one end of the USB cable to your PC or to a powered hub. Connect the mini-B connector to the iCE65 board. The USB cable supplies power to the board.
- 3** Insert the LED Peripheral Module in the six-pin cable, connected to socket J20 (upper left). Carefully match pin 1 on the cable.
- 4** Turn on the power switch. The red LED adjacent to the power switch lights up, indicating that the board is properly powered.
- 5** The iCE65L04 device automatically loads an application program from the pre-programmed SPI serial Flash. The LEDs on the peripheral module blink, controlled by the 32.768 kHz oscillator found on the back of the board.



- 6** For more information, software, applications, and support please visit ...

User Name: customer Password: bl uei ce

www.siliconbluetech.com/iCEman65

Wonder what you will find on the iCEman65 Support Website?

www.siliconbluetech.com/iCEman65

User Name: customer Password: blueice

- A complete iCEman65 Kit User Guide
- Full schematics
- Gerber layout files
- Example applications
- Frequently-asked questions (FAQ)
- Troubleshooting guide
- Links to affordable accessory boards and cards for your iCEman65 board
- Latest news and developments

